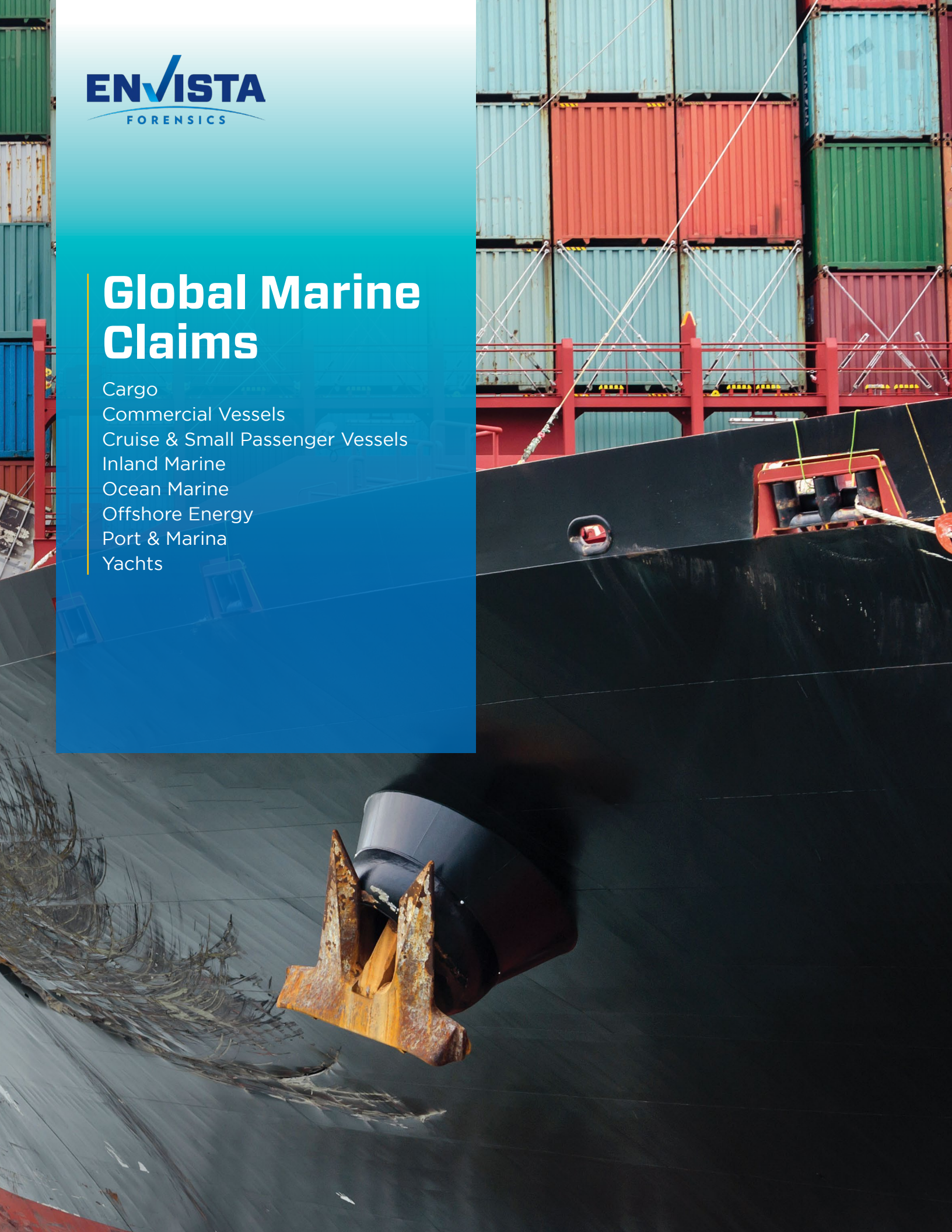
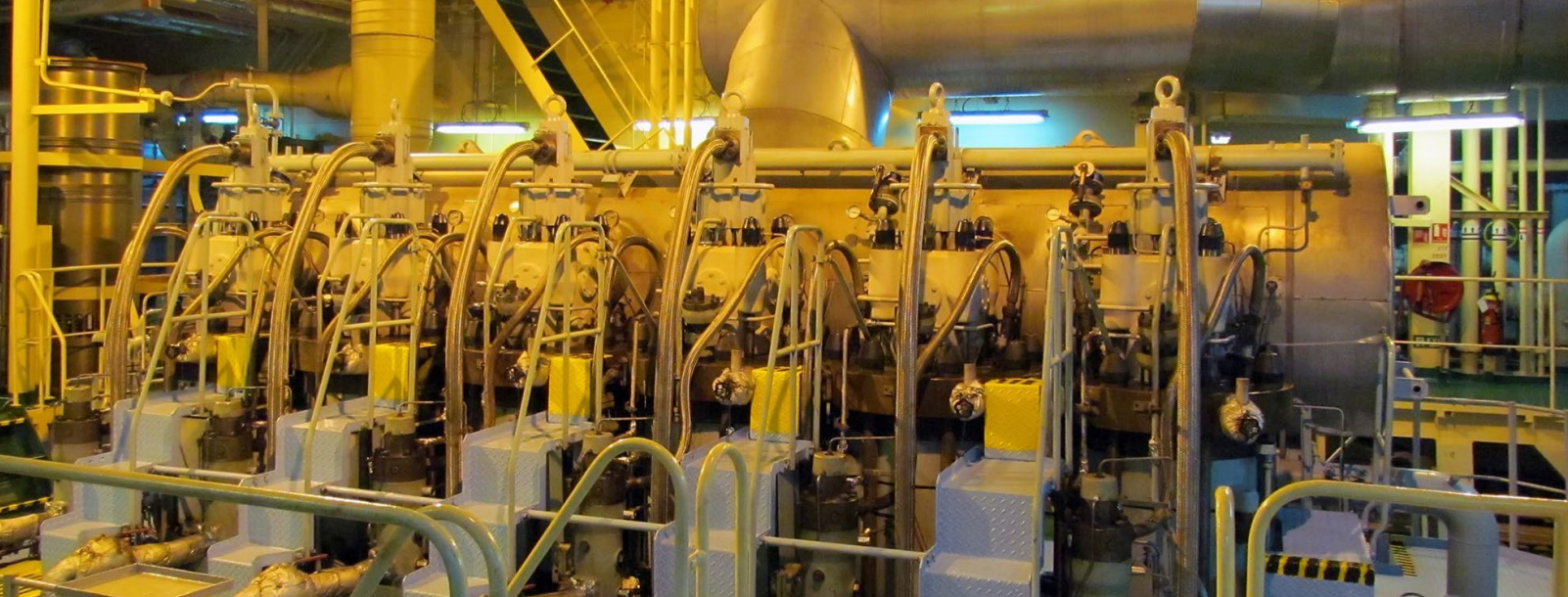




Global Marine Claims

- Cargo
- Commercial Vessels
- Cruise & Small Passenger Vessels
- Inland Marine
- Ocean Marine
- Offshore Energy
- Port & Marina
- Yachts





Handling Complex Marine Claims

Marine claims are often extremely complex and require the appropriate team of experts to mitigate losses as quickly as possible.

Envista's marine experts specialize in leading complex investigations following severe marine incidents and accidents.

We assist claims adjusters, legal professionals, risk managers, and brokers with claims from ocean-going blue water vessels to brown water vessels on the nation's inland waterways and recreational vessels and yachts.

With increasing engineering and electronic complexity across the global supply chain, and ever greater scrutiny placed on management of claims, a robust substantiated opinion on the cause, extent of damage, and critical steps for minimizing loss is essential.

ENVISTA'S WORLDWIDE CAPACITY OFFERS:



The ability to work one matter across land and sea, as one team, to meet client needs.



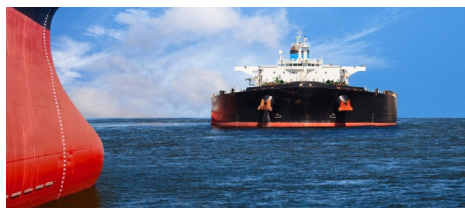
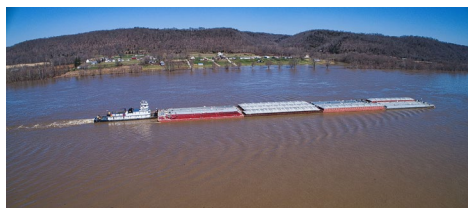
Breadth and depth of subject matter experts that span numerous technical and scientific fields to truly deliver on multi-disciplinary, complex claims.



A unique structure to opine on any marine business line, and provide answers in one comprehensive report.

KEY MARINE BUSINESS LINES & CLAIM TYPES:

- » Blue Water Ocean Marine
- » Brown Water Ocean Marine
- » Cargo
- » Commercial Vessels
- » Cruise and Small Passenger Vessels
- » Inland Marine
- » Offshore Energy
- » Port and Marina
- » Yachts





Service Offerings

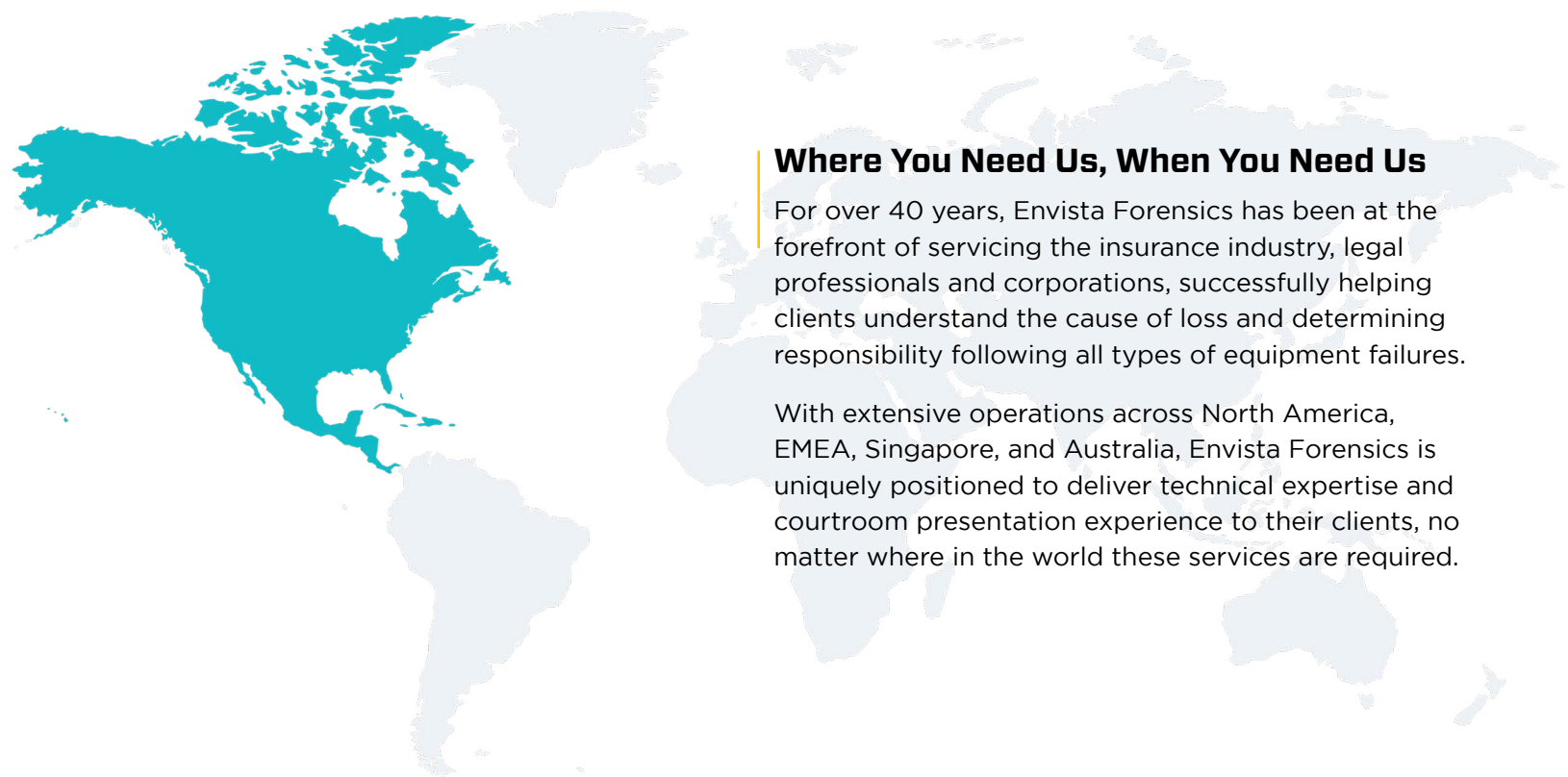
- » 3D Site Documentation
- » Accident Reconstruction
- » Corrosion and Coating Defect Analysis
- » Damage Assessments and Repair Plans
- » Drone UAV
- » Electrical Diagnostics and Failure Analysis
- » Electronics Contamination Assessment
- » Emergency Recovery Assessment of Mechanical and Electrical Equipment
- » Fire Origin and Cause
- » Marine Pollution and Environmental Investigation
- » Shipyard/New Construction Vessel Defect and Liability
- » Slip Resistance Testing
- » Structural Failure Analysis and Material Testing
- » Vessel Cargo Securing, Cargo Stowage, and Cargo Loss Exams
- » Vessel Marine Casualty or Accident Investigation
- » Vessel Stability and Structure Reviews

CONTACT US

e. project@envistaforensics.com

p. +1 888-782-3473

www.envistaforensics.com



Where You Need Us, When You Need Us

For over 40 years, Envista Forensics has been at the forefront of servicing the insurance industry, legal professionals and corporations, successfully helping clients understand the cause of loss and determining responsibility following all types of equipment failures.

With extensive operations across North America, EMEA, Singapore, and Australia, Envista Forensics is uniquely positioned to deliver technical expertise and courtroom presentation experience to their clients, no matter where in the world these services are required.



www.envistaforensics.com

+1 (888) 782-3473